

Palace of Holyroodhouse: Photo journey through the site.



If you have any questions or require any assistance during your visit, please do not hesitate to ask a member of staff who would be delighted to help.

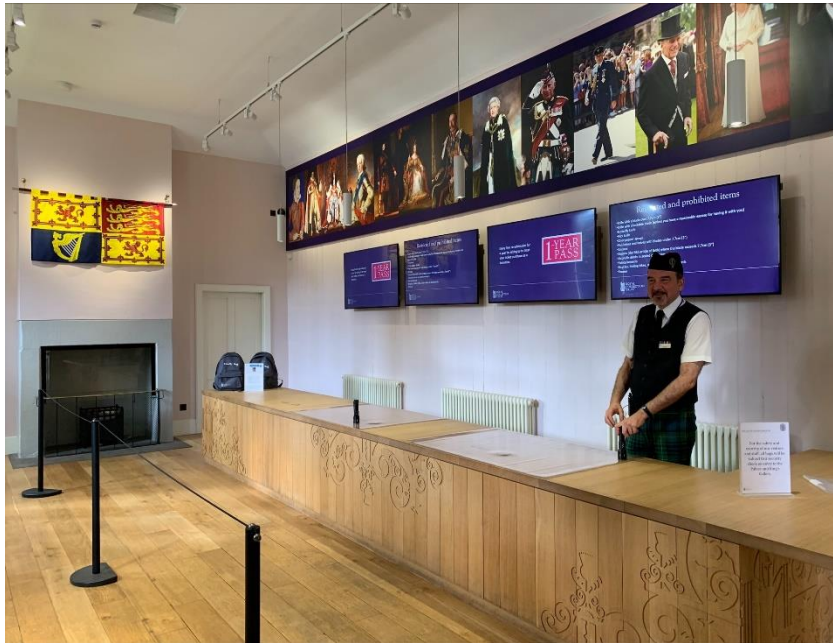
As the Palace of Holyroodhouse is a working royal palace, visitor routes may be subject to change.

Palace Ticket Desk and Entrance



A member of our Admissions Team will welcome you at the Palace entrance and direct you through the archway to our bag check area and to the multimedia guide collection point for your visit.

Welcome Centre



For security, bag checks are in operation at the start of your visit. We have a number of Sensory Bags available in the Welcome Centre on a first come first served basis. Please ask a member of staff if you have any questions.

The displays within the Welcome Centre may change throughout the year.

Multimedia guide pick-up point



To make the most of your visit, pick up one of the free multimedia guides from a member of our Warden Team at the start of your visit. You are welcome to use your own standard wired headphones if you prefer.

Our multimedia guides are available in: English, Gaelic, French, German, Spanish, Italian, Japanese, Russian, Chinese, Brazilian Portuguese and British Sign Language. There is also a Descriptive Audio Guide available for Blind and partially sighted visitors.

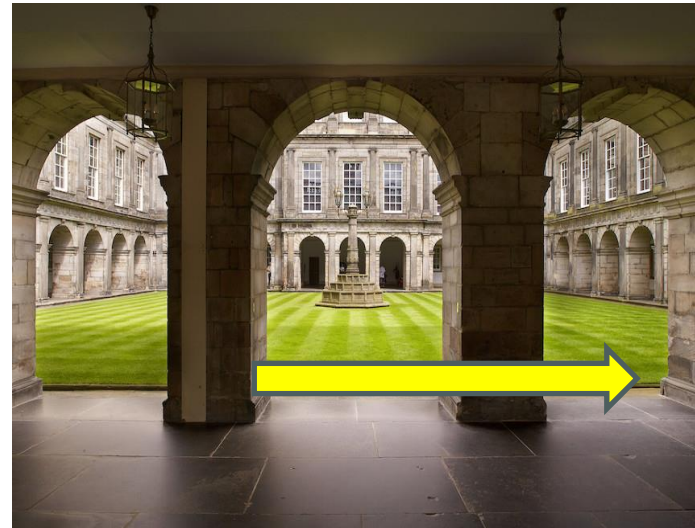
Visitor route to the Mews toilets:



Toilets, including an accessible toilet and separate baby-care facilities, are located in the Mews. We encourage you to use these facilities before starting your visit as there are no public toilet facilities available within the Palace itself.

The nearest Changing Places toilet facility is located at the [Scottish Parliament](#) building directly opposite the Palace of Holyroodhouse.

Palace forecourt and entrance via Quadrangle:

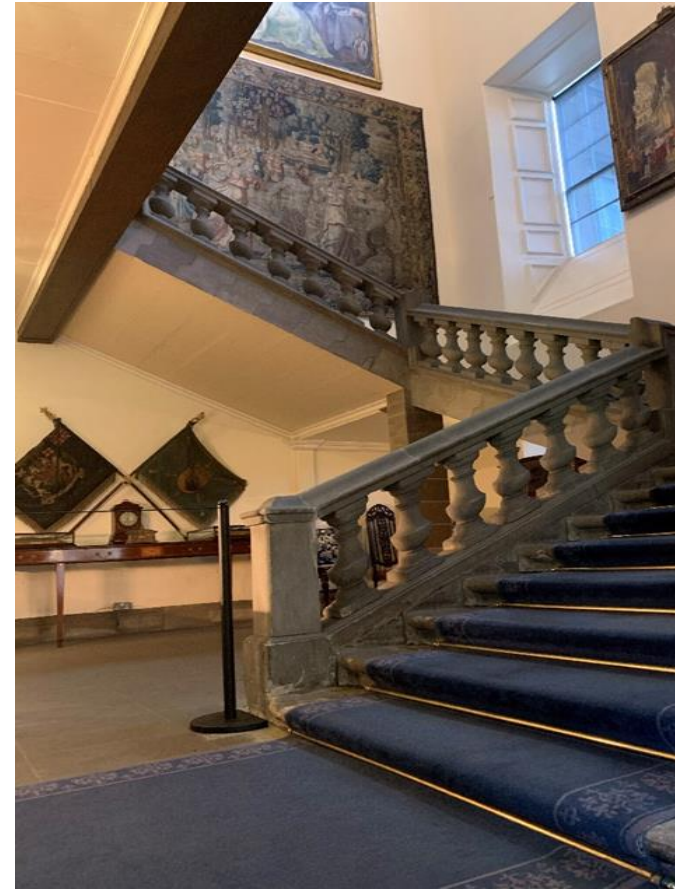


When you are ready to enter the Palace of Holyroodhouse, head across the Forecourt to the front door of the Palace where you will enter the Quadrangle.

If you are using a multimedia guide, please listen to number 2 and 3 in the Quadrangle. When you are ready to enter the Palace, turn right.

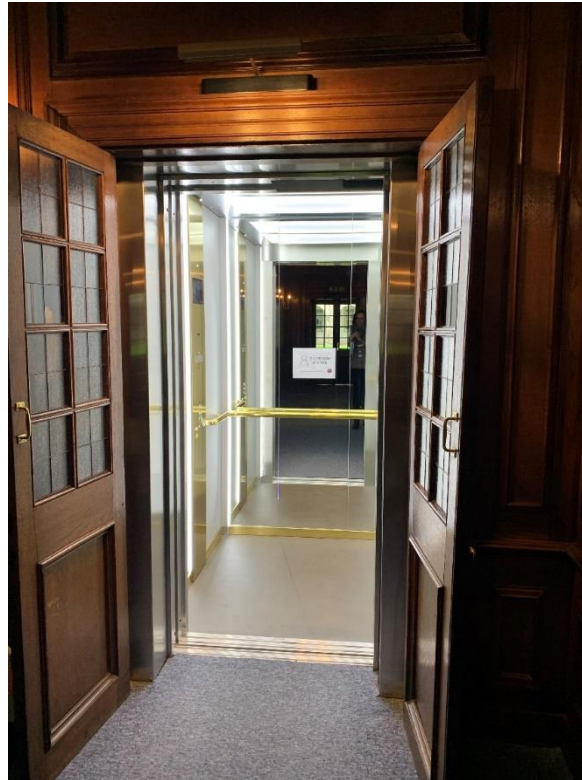
Please note that photography is not permitted inside the Palace of Holyroodhouse but is welcomed outside on the Palace Forecourt (image left) and in the Palace Gardens.

Entrance to the Great Stair



To access the inside of the Palace of Holyroodhouse, there are 27 steps in the Great Stair. If you require lift access to the first floor, please speak to a member of our Warden Team (positioned in the Palace entrance) who would be delighted to help.

Accessible Lift to State Apartments



Visitors using the lift will be accompanied by a member of staff.
Our lift measures 130cm in width x 125cm in depth, the door width is 89cm and the
is a weight limit of 800kg.

The Royal Dining Room



Please note the entrance and exit to the Royal Dining Room is the through same door. As you exit the Royal Dining Room, turn left into the Throne Room.

The Throne Room

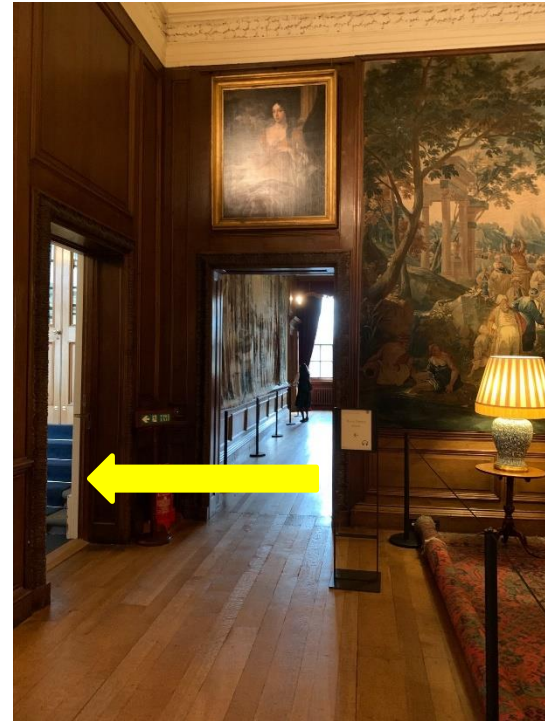


Please note that the lighting in the Throne Room is slightly darker than other rooms to protect the historic paintings.

Please ask a member of our Warden Team if you need any assistance.



The Presence Chamber and directions to the Artemisia Gentileschi Display



Artemisia Gentileschi Display



We are delighted to have a special display of works of Artemisia Gentileschi including *Susanna and the Elders* alongside the *Self-Portrait as the Allegory of Painting*.

Once you have viewed the display, please retrace your steps back into the Presence Chamber to continue your visit.

Privy Chamber and King's Ante Chamber



The King's Bedchamber and the King's Closet:



The Great Gallery and the Lobby



A number of wooden benches are positioned down the center of the Great Gallery.

The Ante-Chamber and Darnley's Bedchamber



Visitor route to Mary, Queen of Scots' Chambers



Due to the historic nature of the building, there is no wheelchair access to Mary, Queen of Scots' Chambers, which are accessed via a steep spiral staircase consisting of 25 steps.

Film and audio content on Mary, Queen of Scots can be found on the multi-media guide.

Mary, Queen of Scots' Bedchamber and Outer Chamber



Exit from Mary, Queen of Scots' Chambers



To exit Mary, Queen of Scots' Chambers, there is a spiral staircase of 43 steps.

At the bottom of the spiral staircase, there is a short landing. Turn right and head down the second staircase of 13 straight steps to exit.

Please use the handrail at all times and take your time when descending the stairs.

Route to Holyrood Abbey and Palace Gardens



At the bottom of the stairs, please turn right and follow the corridor out into the Abbey Courtyard. The flooring in this area is slabbed. Please note, some of the historic slabs may be slightly uneven underfoot.

Holyrood Abbey



Holyrood Abbey is accessed by a cobbled courtyard and there is step/ramp access into the Abbey itself. The flooring in the Abbey includes slabbed and gravel areas.

Please note, Holyrood Abbey is currently undergoing conservation work and some areas inside the Abbey may not be accessible on your visit.

Option to exit or continue to enjoy Palace Gardens



After visiting Holyrood Abbey, you have the option to exit back to the Forecourt where your visit began, or you may continue to walk around the beautiful Royal Gardens. The Royal Gardens are accessed across the cobbled courtyard on to a gravel path.

The Palace Gardens



The path round the beautiful gardens is gravel. It is a circular route, returning to the Forecourt and takes approximately 15 minutes.

Please note there is a temporary walkway tunnel in place behind Holyrood Abbey whilst essential conservation works takes place.

Exit from the Palace Gardens and Multimedia Guide drop off



Multimedia guide drop off and exit from the Palace of Holyroodhouse



Once you have finished your visit, the exit is via the Archway where you can also hand in your multimedia tour, if you have taken one.

Please note that your ticket can become a 1-Year Pass that will allow you to visit the Palace as many times as you like, in a year, for free. Please ask a member of staff for more information.

Café at the Palace



The Café at the Palace offers a range of soup, sandwiches, hot meals, home-made cakes and refreshments.

A takeaway service is available. Dogs are welcome in the outdoor areas of the Café.



Café toilet entrance and toilet facilities



Hand dryers are positioned underneath the mirrors of the toilets.

These can be noisy, and so paper towels are also available as an alternative option as well.

Café accessible toilet facility



Entrance to the Palace Shop



The Palace Shop is on one level with wooden flooring.

Please do not hesitate to ask a member of staff who would be delighted to help if you require any assistance during your visit.

We hope that you enjoy your visit to the Palace of Holyroodhouse.

For further information on events and exhibitions please visit: www.rct.uk